



# MONTHLY MEMBERSHIP PROGRESS REPORT

District 4 L5

Results as of: 05/31/2019

GMT: HOWARD HUDSON

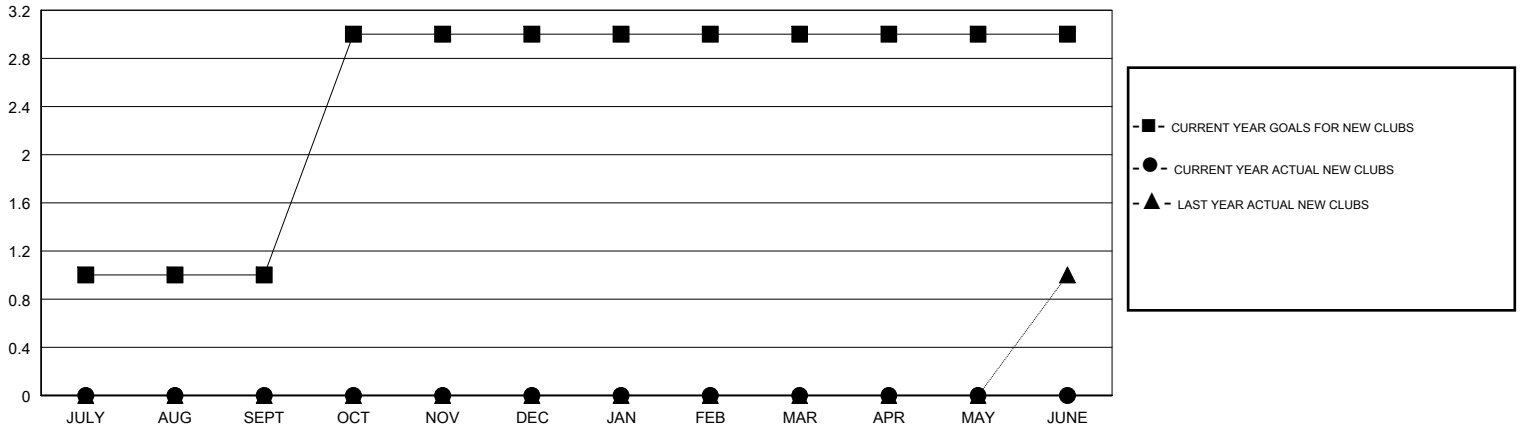
LOCATION CALIFORNIA

GMT CA

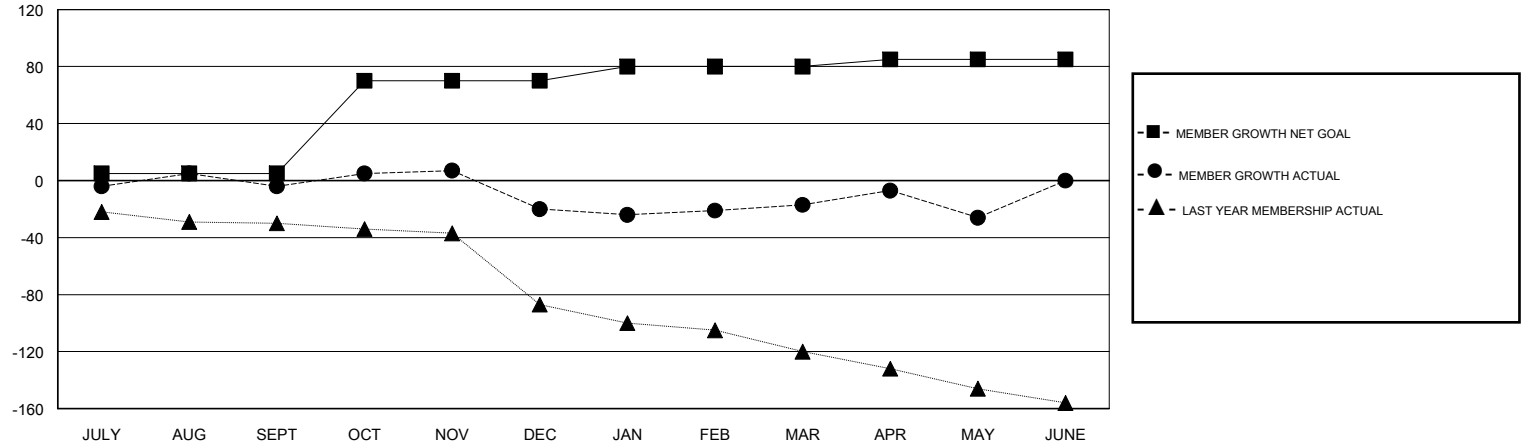
Clubs			
RESULTS FOR 2018-2019			
QUARTER	NEW CLUB GOAL	NEW CLUBS	DROPPED CLUBS
JULY/AUG/SEPT	1	0	0
OCT/NOV/DEC	2	0	1
JAN/FEB/MAR	0	0	0
APR/MAY/JUNE	0	0	0

Members			
RESULTS FOR 2018-2019			
QUARTER	MEMBER GROWTH NET GOAL	MEMBER GROWTH ACTUAL	DROPPED MEMBERS ACTUAL (including transfers)
JULY/AUG/SEPT	5	30	32
OCT/NOV/DEC	65	35	45
JAN/FEB/MAR	10	37	30
APR/MAY/JUNE	5	35	30

GOALS AND ACTUAL NEW CLUBS CUMULATIVE



GOALS AND ACTUAL MEMBERS CUMULATIVE



DROPPED CLUBS: 1	29 CLUBS OF 45 ADDED 1 OR MORE NEW MEMBERS	<u>GENDER DISTRIBUTION</u>	
		MALE	512 (53.56%)
		FEMALE	444 (46.44%)
		Women Percentage Fiscal Year Goal: 50%	
<u>DROPPED MEMBERS</u>		TOTAL FAMILY UNIT MEMBERS	232
DECEASED	15	FAMILY MEMBERS PAYING HALF DUES	118
CLUB CANCELLED	17		
OTHER	105		
TOTAL	137		

[CLICK HERE FOR CUMULATIVE MEMBERSHIP DATA](#)